



4 Channel Standalone Data Recorder - Overview

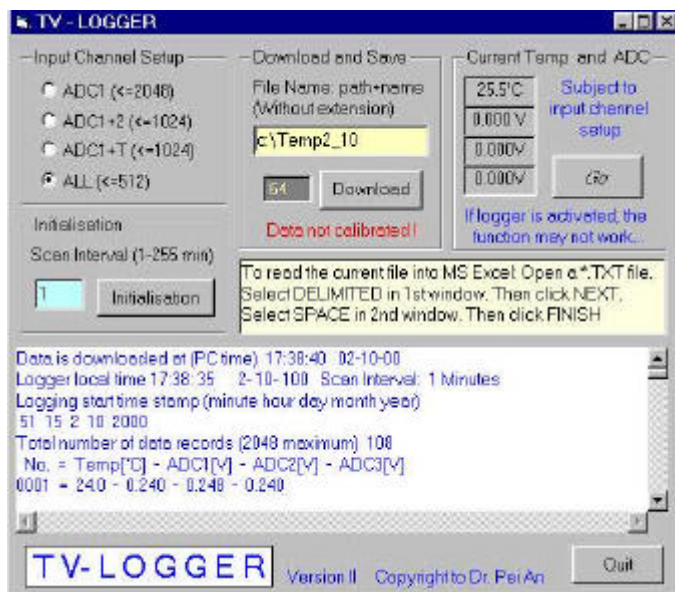
X-logger is a low-cost standalone 4-channel logger. It logs one temperature (Tch) and 3 analogue voltages (Vch1, Vch2 and Vch3). Working on its own, the logger can measure temperature and voltage and store the value into its on-board memory for future retrieval.



The logger is initialised by a Window 95/98 compatible software via the serial port of a personal computer or a portable computer. Once it is initialised, the logger can be disconnected from the PC and deployed to the designated locations. A data logging session starts after the Start button is pressed.

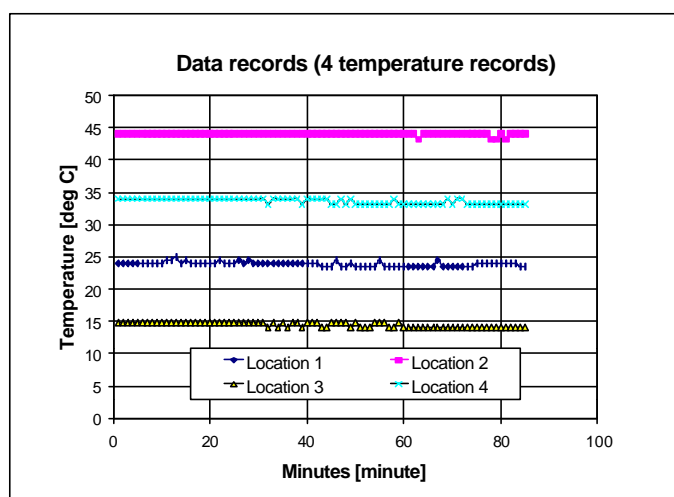
As soon as the Start Button is pressed, The 1st temperature/voltage measurement is taken. After this, the T-logger will automatically measure temperature/voltages and store that in the on-board memory at a preset interval.

After the data logging session is completed, the logger is re-connected to a computer and temperature data stored in the logger are downloaded in a PC and saved into a DOS text file. The file can be import into spreadsheet programs such as Lotus 123, Microsoft Excel for further analysis.



Window-based X-logger program

- ♣ Cost-effective standalone data logging solution
- ♣ 9-pin female D-type RS232 connector for connection
- ♣ For 486, Pentium I to III PCs
- ♣ On-board temperature sensor and 8-bit A/D converter
- ♣ Initialisation and data download via RS232 port of PCs
- ♣ Stand-alone temperature Logging with a measurement accuracy of 0.5 deg C
- ♣ The measurement accuracy is within +/- 2 deg C
- ♣ Selectable scanning cycle interval (number of minutes between two temperature measurements. 1 minute to 255 minutes range)
- ♣ 4 logging configuration:
 - ♣ Vch1 alone (up to 2048 records)
 - ♣ Vch1+Vch2 (up to 1024 records)
 - ♣ Vch1+Tch (up to 1024 records)
 - ♣ All 4 channels (up to 512 records)
- ♣ Temperature stored as a function of time.
- ♣ Temperature stored as histogram (63 bins from -40 to 85 deg C, 2 deg C resolution)
- ♣ Slim size: 70mm by 70mm by 27 mm. Vented casing
- ♣ Use a CR1620 3V lithium button cell for 5 years operation
- ♣ Windows 95/98 driver for initialisation, download and calibration
- ♣ Data file format: DOS delimited text format ready for spreadsheet applications
- ♣ Operation temperature range: -10 to 85 deg C



If you require any sensors for the X-logger, Intec can help you to choose or design/make a suitable sensor extension box for you.